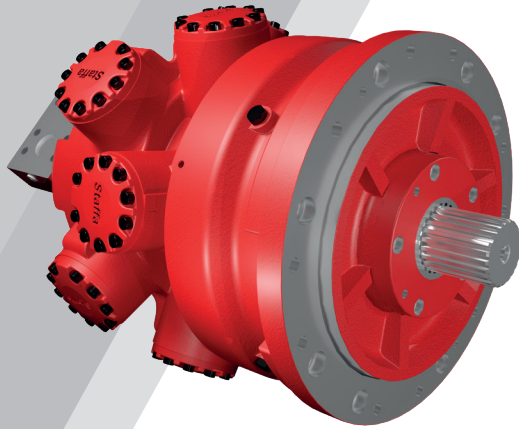


Staffa Brakes

Parking Brakes for Kawasaki Staffa Motors

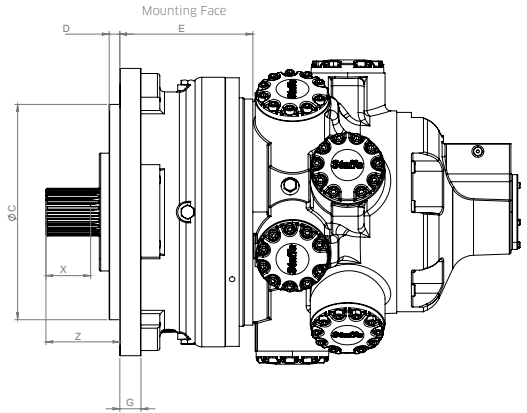
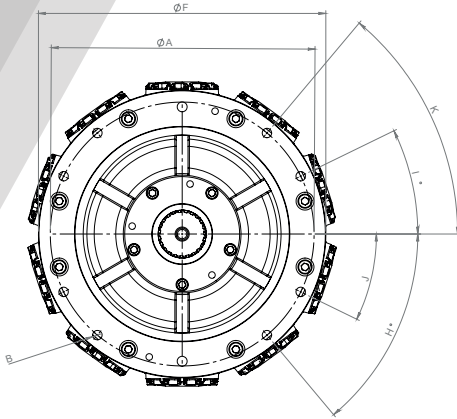
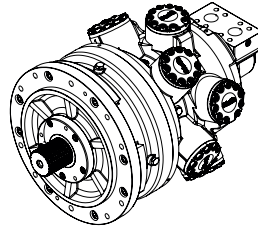
Key Features

- Hydraulic release, spring applied brake units to suit the KPM Staffa Motor Range.
- External spline or parallel key shafts available.
- Brake units can be integrated into planetary gearboxes.
- Compatible with all Staffa frame sizes



Staffa Brake Model Ref	HMB/C Compatibility	Static Brake Torque	Min. Pressure for Full Release	Oil Volume for Full Release	Max. Cont. Pressure	Operating Temp. Range
		Nm	bar	cc	bar	°C
F032	B030, B045, C030, C045	2,750	31	65	70	-40 to +80
F102	B060, B080, B100, C080	6,200	40	117	70	-40 to +80
F202	B125, B150, B200, C125, C200	13,830	28	230	70	-40 to +80
F402	B270, B325, B400, B500, C270, C325, C400	32,540	28	260	70	-40 to +80

Installation Dimensions



*HMB400 shown for reference

Brake Code	P.C.D	Mounting Holes	Spigot	Spigot Face to Mounting Face	Mounting Face to back of Brake	Max OD	Brake Port	Mounting Face Thickness	Mounting Holes Angle 1	Mounting Holes Angle 2	Mounting Holes Angle 3	Mounting Holes Angle 4	Compatible Splines
Dimension	A	B	C	D	E	F		G	H	I	J	K	
F032	325	5x Ø18.5	179.91 179.96	13	161	365	1/4"B.S.P	25	Equi-spaced Starting With One Hole In The Top Centre				1 or 2
F102	415	4x Ø20	301.500 301.576	19	252	450	1/4"B.S.P	25	50°	26°	N/A		3
F202	560	4x Ø20	380.87 380.95	22	260	615	1/2"B.S.P	30	50°	26°	N/A		4, 5 or 6
F402	560	8x Ø20	457.15 457.07	22	282.5	615	1/2"B.S.P	45	50°	26°	50°	26°	4, 5 or 6

Spline Number	1	2	3	4	5	6
Spline Detail	B53550 17T 8/16	DIN5480 W55x3x17x7h	B53550 16T 6/12	B53550 20T 6/12	B53550 23T 6/12	DIN5480 W100x4x24x7h
X	67	67	54	76.2	95	95
Z	130	130	131	145	165	165

*For information about plain shafts please contact KPMUK