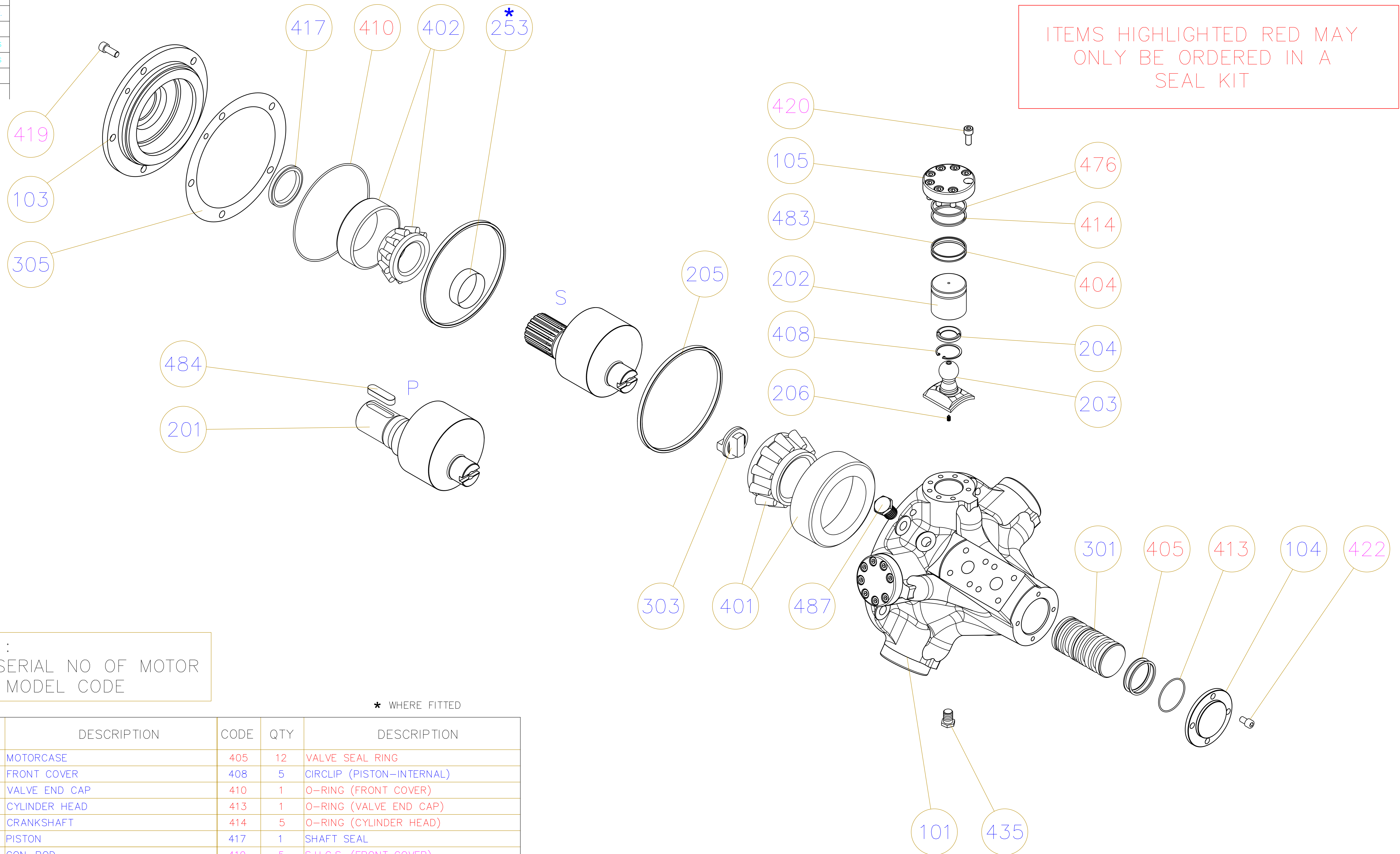


DRAWING No. 016392			
ISSUE	CHANGE	DATE	CHK.
A		04.08	
B		01.12	FS
C	PM19/048	04.19	FS

DO NOT SCALE

IF IN DOUBT-ASK




ITEMS HIGHLIGHTED RED MAY ONLY BE ORDERED IN A SEAL KIT

ITEMS HIGHLIGHTED MAGENTA MAY ONLY BE ORDERED IN A BOLT KIT

SPARES :
QUOTE SERIAL NO OF MOTOR
+ FULL MODEL CODE

* WHERE FITTED

CODE	QTY	DESCRIPTION	CODE	QTY	DESCRIPTION
101	1	MOTORCASE	405	12	VALVE SEAL RING
103	1	FRONT COVER	408	5	CIRCLIP (PISTON-INTERNAL)
104	1	VALVE END CAP	410	1	O-RING (FRONT COVER)
105	5	CYLINDER HEAD	413	1	O-RING (VALVE END CAP)
201	1	CRANKSHAFT	414	5	O-RING (CYLINDER HEAD)
202	5	PISTON	417	1	SHAFT SEAL
203	5	CON-ROD	419	5	S.H.C.S. (FRONT COVER)
204	10	PISTON RETAINING HALF RING	420	40	S.H.C.S. (CYLINDER END CAP)
205	2	CON-ROD RETAINING RING	422	4	S.H.C.S. (VALVE END CAP)
206	5	RESTRICTOR SCREW	435	2	DRAIN PLUG
253 *	1	SHAFT SLEEVE	476	5	BACK-UP RING (CYLINDER END CAP)
301	1	VALVE SPOOL	483	5	PISTON SEAL BACKING RING
303	1	OLDHAMS COUPLING	484	1	CUSTOMER KEY
305	-	SHIM (STEEL)	487	1	PLASTIC PLUG
401	1	REAR BEARING			
402	1	FRONT BEARING			
404	5	PISTON SEAL RING			

THIRD ANGLE PROJECTION	NAME	DATE	 Staffa Products <small>Emesettle, Plymouth PL5 2SA www.kpm-eu.com</small>
DR.	M.NORMAN	17.04.08	
CHK.			
ENGRG. APPVL.			
WT.			TITLE
			GENERAL ASSEMBLY (FOR SPARES)
			HMB010 MOTOR
ALL TECHNICAL DATA DISCLOSED HEREIN IS THE PROPERTY OF KAWASAKI AND SHALL NOT BE USED BY OTHERS FOR MANUFACTURE, PROCUREMENT OR DISCLOSURE WITHOUT THE WRITTEN PERMISSION OF THE OWNER.			DRAWING No.
SIZE	A1	SCALE	NTS
SIMILAR TO-			
			DRAWING No. 016392
			SHEET 1 of 1